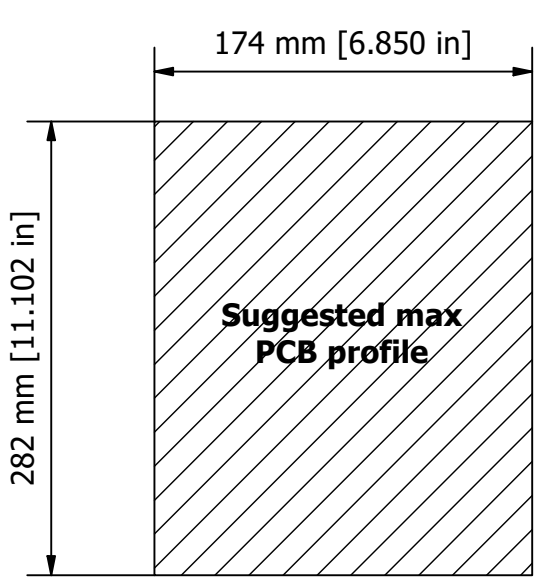
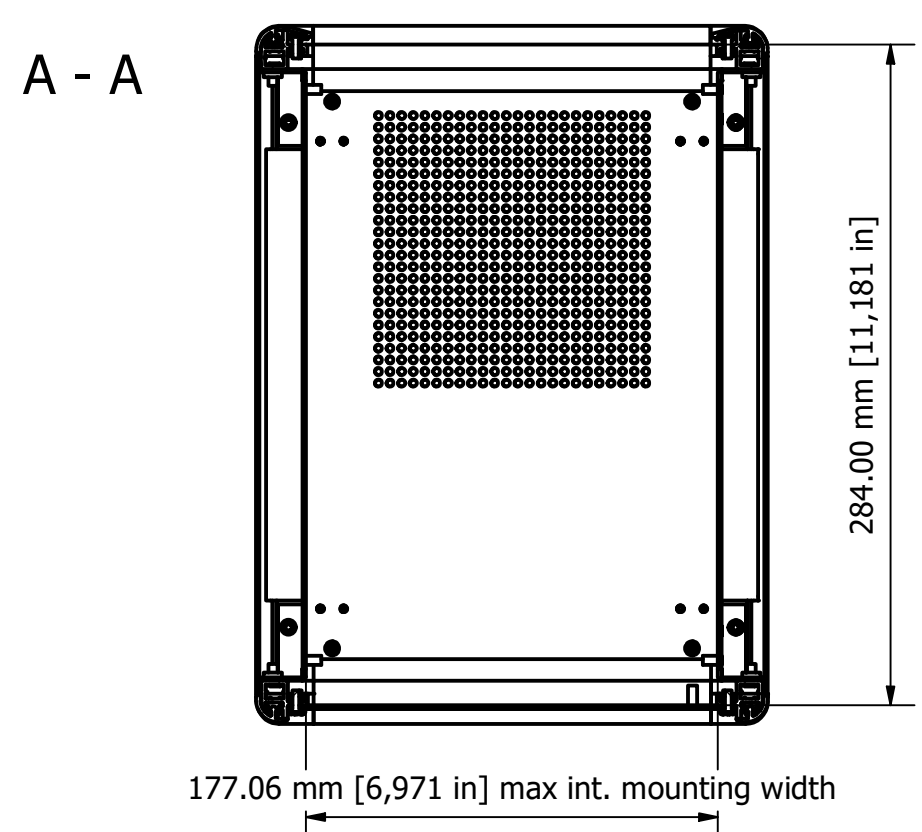
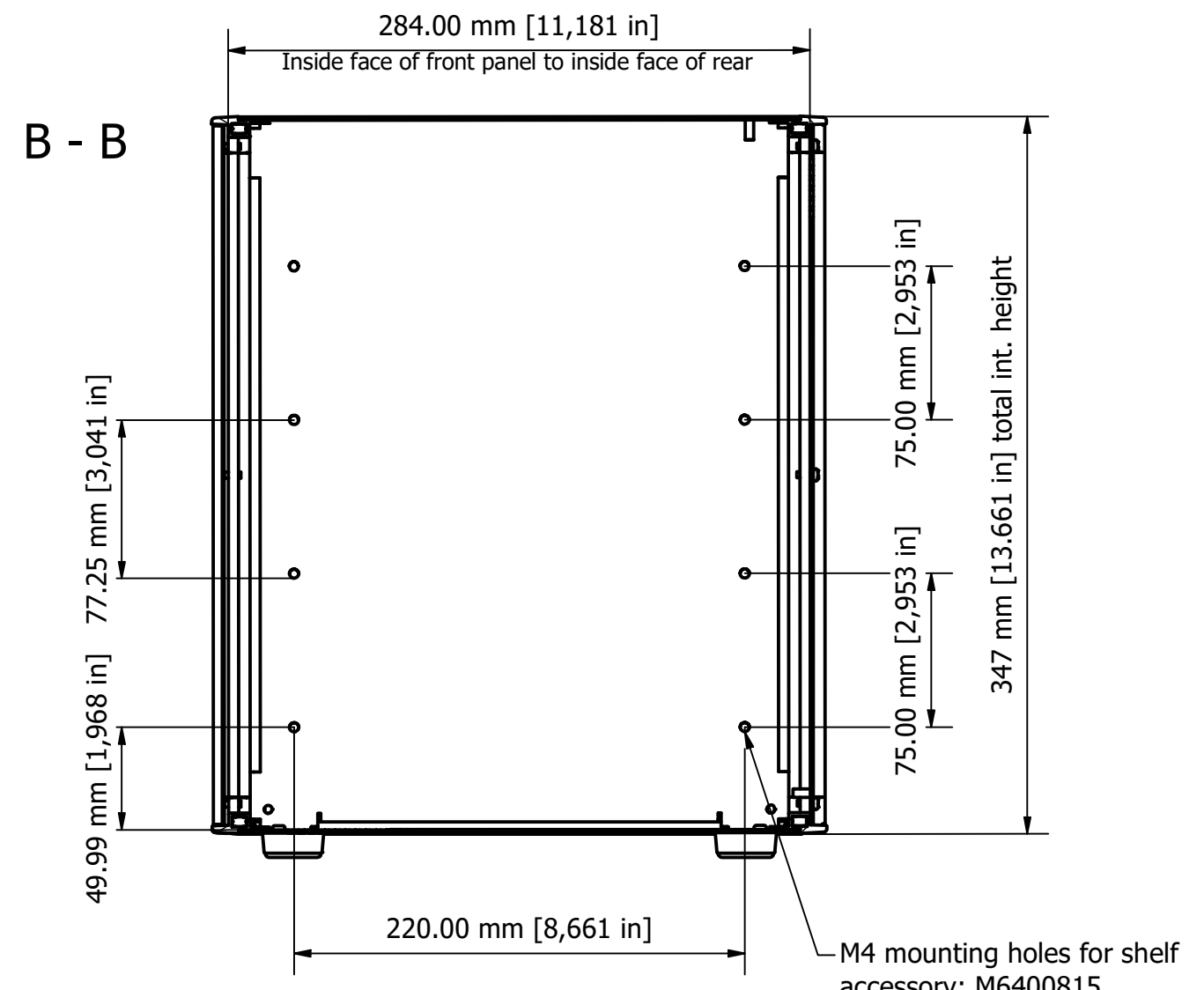
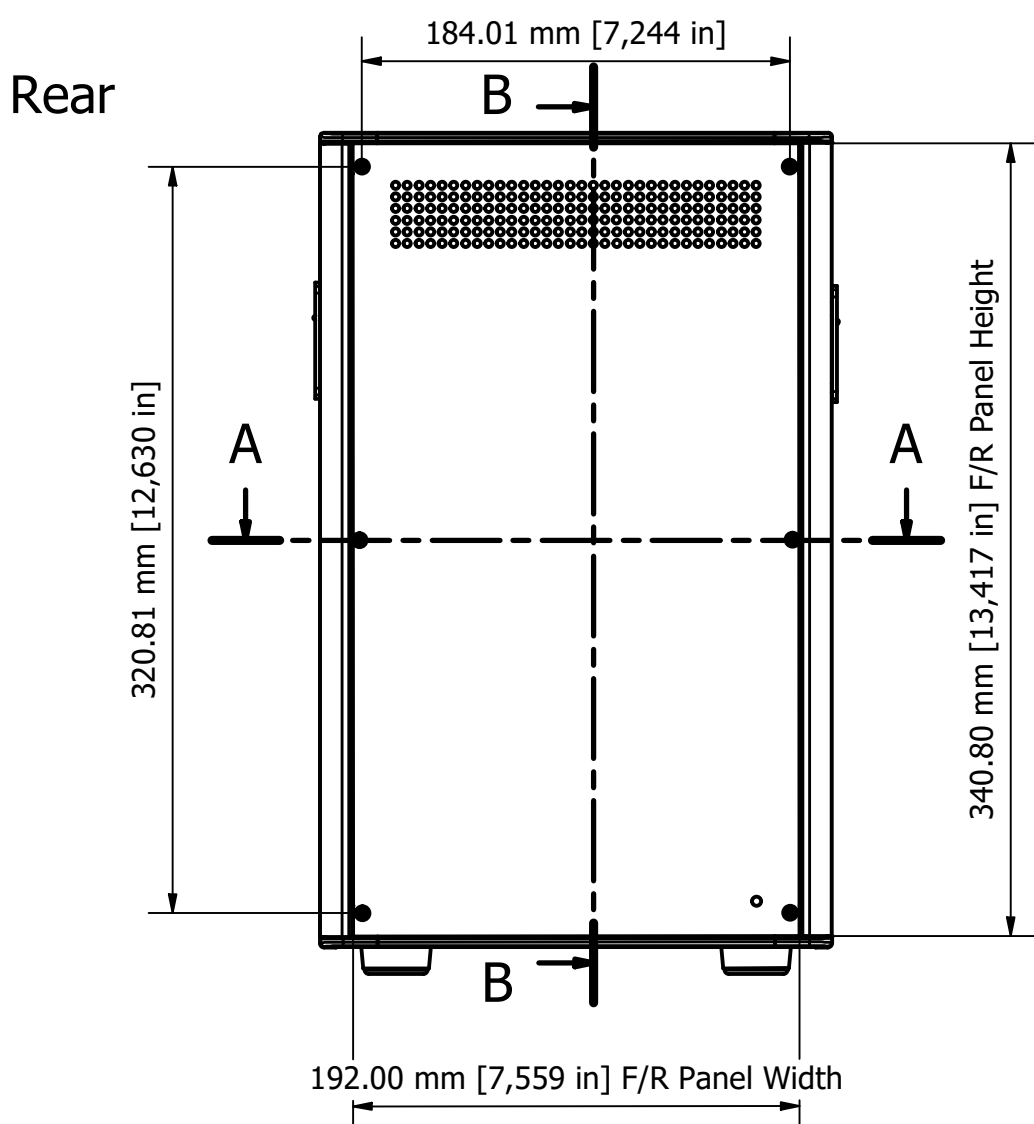


PARTS LIST			
ITEM	QTY	PART NUMBER	DESCRIPTION
1	1	M6402045	Wrap Around Cover
2	1	M6403415	Rear Panel - 1.5mm Thick
3	1	M6403115	Base Panel
4	2	M6403025	Chassis
5	2	M6400115	Front/Rear Bezel
6	8	M6420000	Trim Clips
7	2	M6400048	Front Trim
8	2	M6400068	Rear Trim
9	2	M6000039	Side Handle
10	4	M6420205 flat	Flat Feet
11	12	M3x8mm Pan Screw	Front/Rear Panel Screws
12	8	M4x16 Screw	Bezel Assembly Screws
13	4	M3x6mm CSK Screw	Base Panel Screws

Accessories: Front panel sold seperately: M6400715
Shelves sold seperately: M6400815

© OKW Enclosures Ltd (Date as shown). This drawing contains proprietary information of OKW Enclosures Ltd and is tendered subject to the following conditions. The information be retained in confidence, not be reproduced or copied, and not be used or incorporated in any product, unless permission is obtained in writing from OKW Enclosures Ltd.

Designed by J Moody		Description Technomet TX235S - RAL 9016/7042		Date 20/02/2025	Scale 1:3.5
METCASE ENCLOSURES 15 Brunel Way, Segensworth East, Fareham, Hampshire, PO15 5TX, UK. Tel: +44 (0)1489 583858 Email: sales@metcase.co.uk			METcase™ www.metcase.com		
Part Number M6421756			Issue 1	Sheet 1 / 2	



- Notes:
- 1) Case is fabricated from 1.5 mm aluminium sheet with diecast and extrusion bezels.
 - 2) Case is powder coat painted RAL 9016 fine texture traffic white, with RAL 7042 traffic grey A bezels.
 - 3) Supplied with 4 colour matching Technofeet.
 - 4) Cover, rear and chassis assembly all have M4 x 8 mm earth studs.
 - 5) Front panel screws supplied with each case. (M3 x 8 mm pan).

FIRST ANGLE PROJECTION

Designed by J Moody	Description Technomet TX235S - RAL 9016/7042	Date 20/02/2025	Scale 1:3.5
METCASE ENCLOSURES 15 Brunel Way, Segensworth East, Fareham, Hampshire, PO15 5TX, UK. Tel: +44 (0)1489 583858 Email: sales@metcase.co.uk		METcase™ www.metcase.com Part Number M6421756	
		Issue 1	Sheet 2 / 2