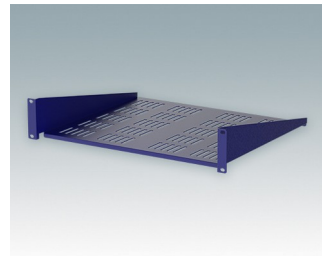
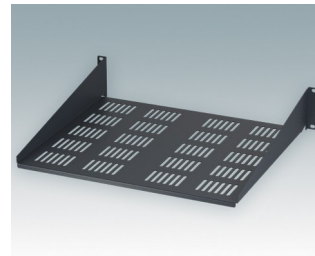
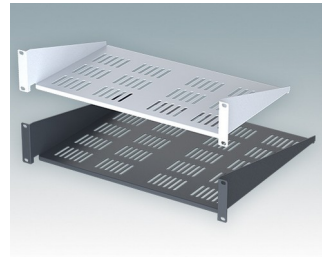
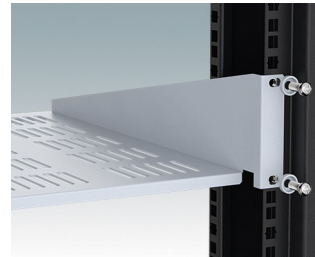
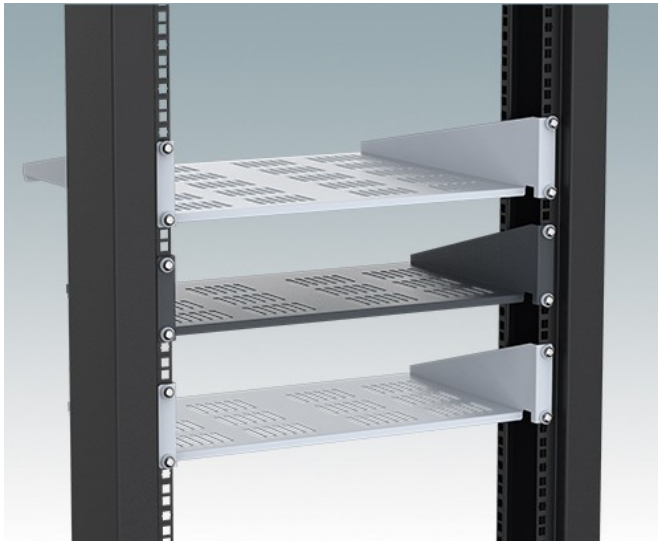


19" CANTILEVER SHELVES

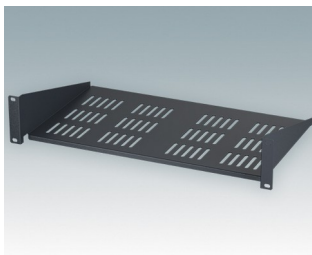
Universal design for mounting to any standard 19" rack or cabinet.

- Conforms to DIN 41494 and IEC 60297-3
- Allow easy installation of equipment that does not have any built-in rack mounting facilities
- Made of CR4 mild steel and painted in a tough powder polyester paint finish
- Slots in the bottom aid in-rack ventilation
- Other sizes can be made to order.

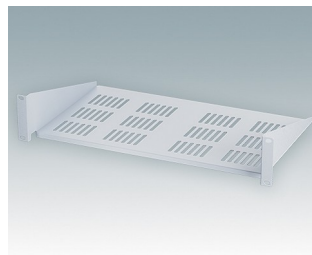
Order your own fully customised version [learn more here >>](#)



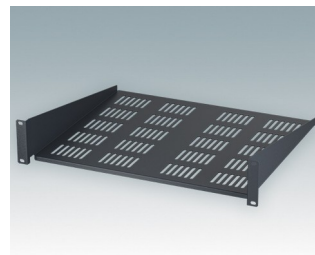
Select Versions



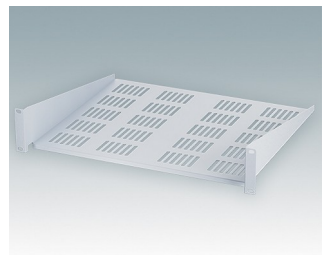
M6119264
19"x2U Cantilever Rack Shelf
Mild Steel CR4
Anthracite RAL 7016
88.1x482.6x280mm



M6119265
19"x2U Cantilever Rack Shelf
Mild Steel CR4
Light grey RAL 7035
88.1x482.6x280mm



M6119284
19"x2U Cantilever Rack Shelf
Mild Steel CR4
Anthracite RAL 7016
88.1x482.6x400mm



M6119285
19"x2U Cantilever Rack Shelf
Mild Steel CR4
Light grey RAL 7035
88.1x482.6x400mm

19" CANTILEVER SHELVES

Accessory



M5900016
19" mounting kit
Black RAL 9005



M6000035
19" mounting kit
Light grey RAL 7035

Subject to technical modification without notice. © OKW Enclosures Ltd