

METcase™

Electronic Enclosures

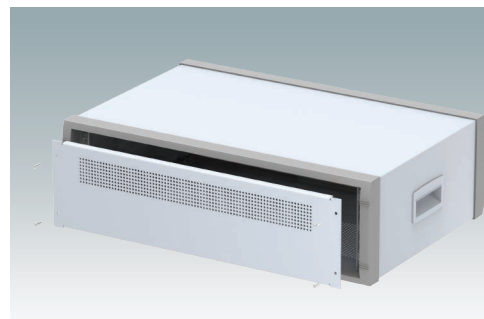
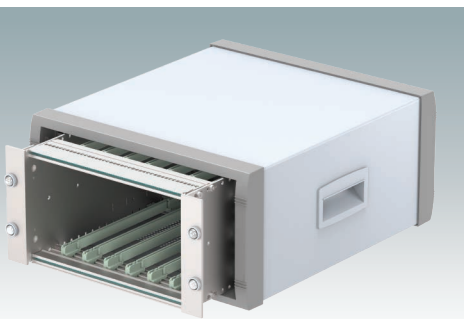


INSTRUMET 19"

Modern Desktop Mini-Rack
Enclosures 19"/10.5"
DIN 41494 | IEC 60297-3



INSTRUMET 19"

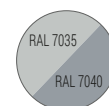


19"/10.5" Mini-Rack Enclosures For Electronics Equipment

Modern aluminium 3U rack enclosures are available in full-width 19" (84HP) or half-width 10.5" (42HP) sizes. All versions conform to DIN 41494 and IEC 60297-3 standards. The design is attractive, featuring diecast front and rear bezels, a removable rear panel and a fabricated case body. Two internal chassis rails provide support for the equipment inside. Ventilation holes are included in the base and rear panel. M4 earth studs are fitted to all panels. Four moulded non-slip ABS feet are attached to the base, including two front tilt legs. Choose from two versions: with two side handles or a tilt/swivel carry handle bar. Contact us to discuss your fully customised version.

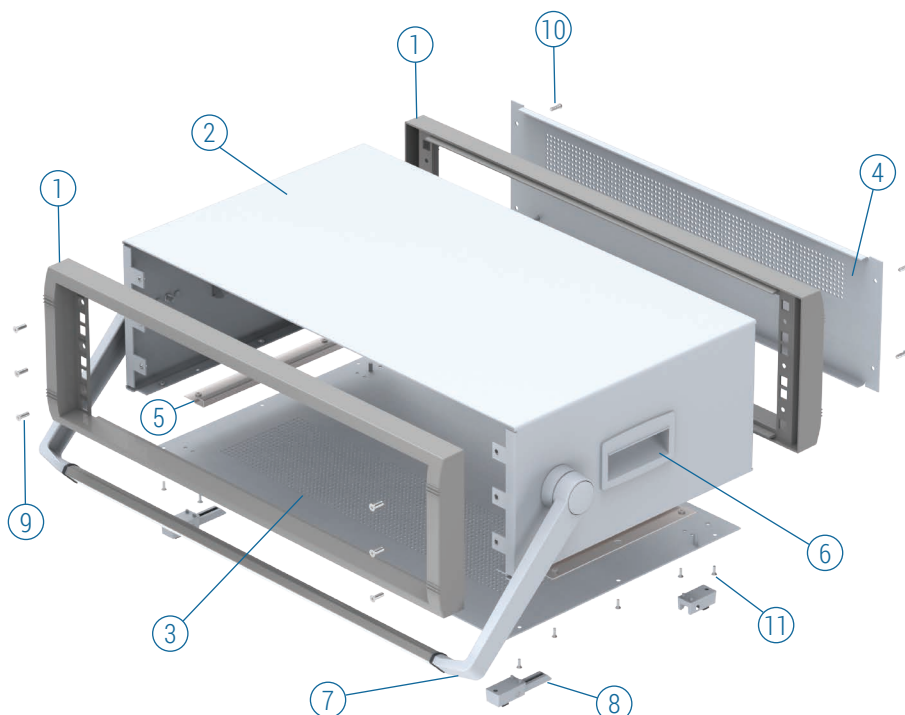
Standard colours

Light grey RAL 7035
Window grey RAL 7040

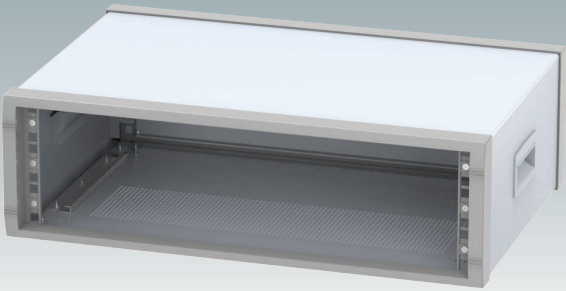
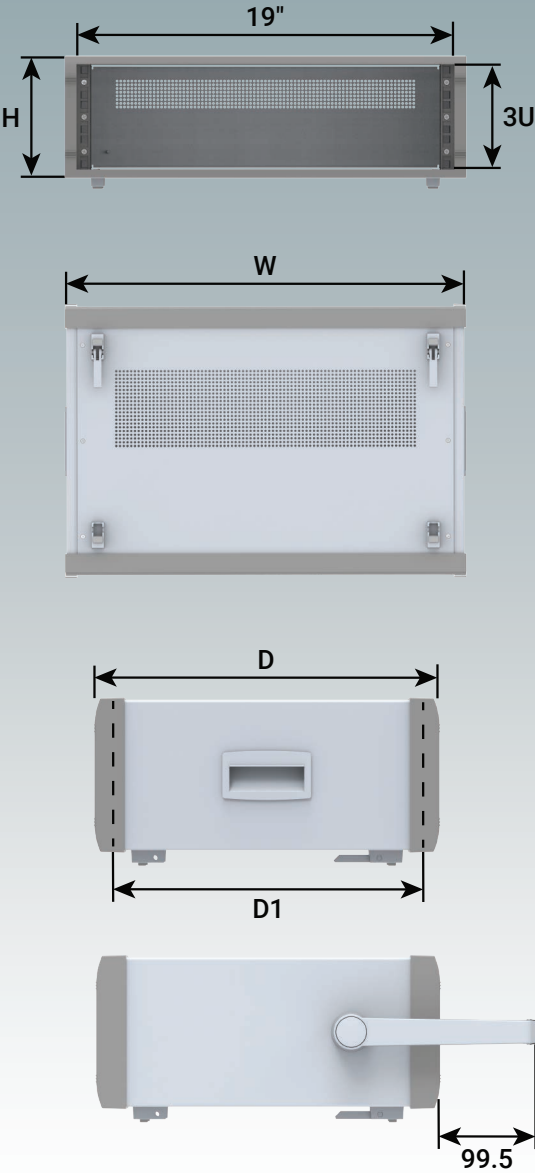


Supply

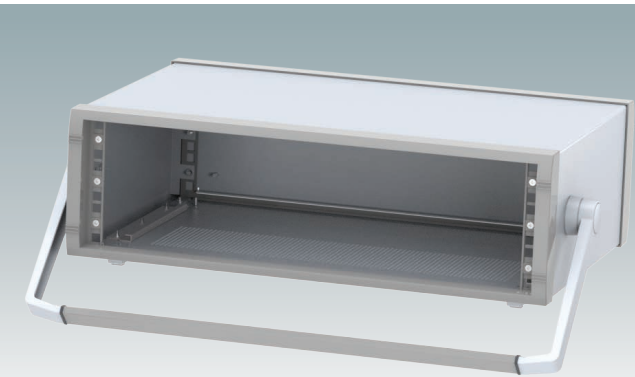
- ① Front/rear bezel (x2)
- ② Top cover
- ③ Base panel
- ④ Rear panel
- ⑤ Chassis support (x2)
- ⑥ ABS side handle (x2)
- ⑦ Tilt/swivel handle
- ⑧ ABS tilt feet
- ⑨ M4 x 10 mm (x8)
- ⑩ M4 x 12 mm (x4)
- ⑪ M3 x 8 mm (x10)



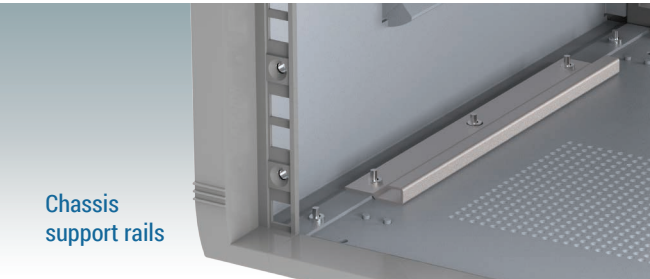
INSTRUMET 19"



With side handles



With carry handle



WITH SIDE HANDLES

Part No.	Version	U	H	W	D	D1
M 60 19 305	19"	3U	157.3	516	350	304.5
M 60 19 325	19"	3U	157.3	516	450	404.5

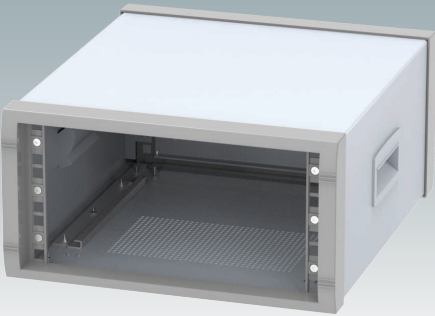
WITH CARRY HANDLE

Part No.	Version	U	H	W	D	D1
M 60 19 315	19"	3U	157.3	516	350	304.5
M 60 19 335	19"	3U	157.3	516	450	404.5

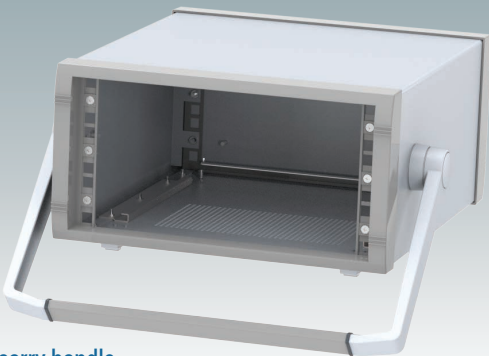
For full 2D drawings and 3D models please see our website.

For front panels and accessories see page 5.

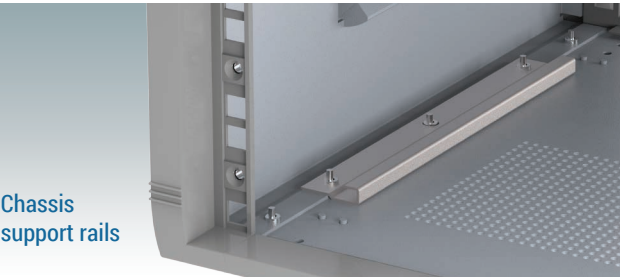
INSTRUMET 19"



With side handles

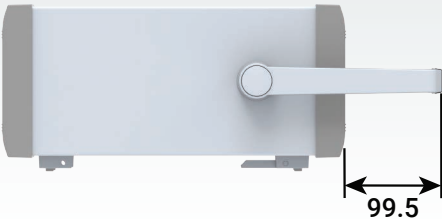
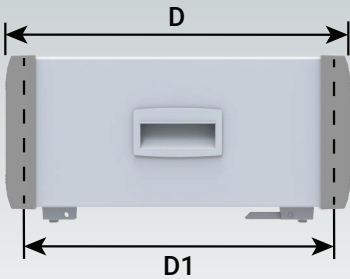
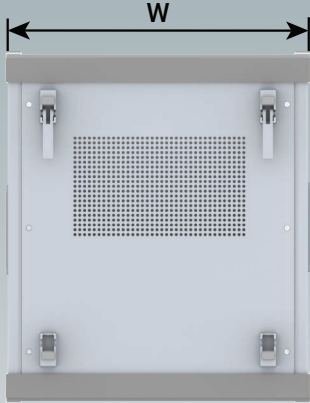
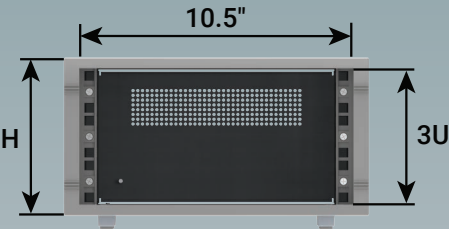


With carry handle



Chassis support rails

INSTRUMET 10.5"



WITH SIDE HANDLES

Part No.	Version	U	H	W	D	D1
M 60 10 305	10.5"	3U	157.3	303	350	304.5

WITH CARRY HANDLE

Part No.	Version	U	H	W	D	D1
M 60 10 315	10.5"	3U	157.3	303	350	304.5

For full 2D drawings and 3D models please see our website.

For front panels and accessories see page 5.

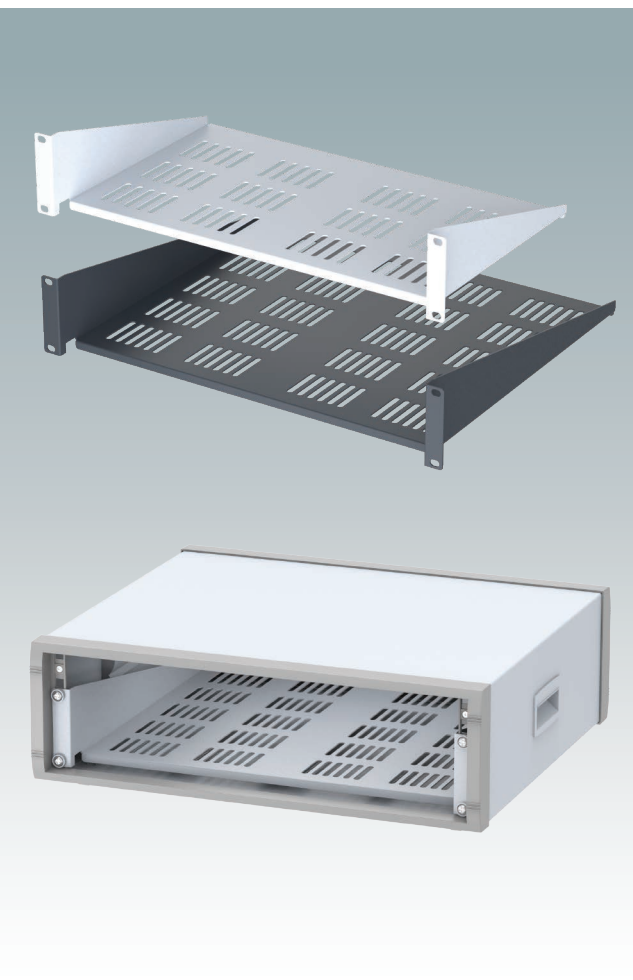


10.5"/19" Front Panels

Supply:

1 panel (3 mm matt anodised aluminium)

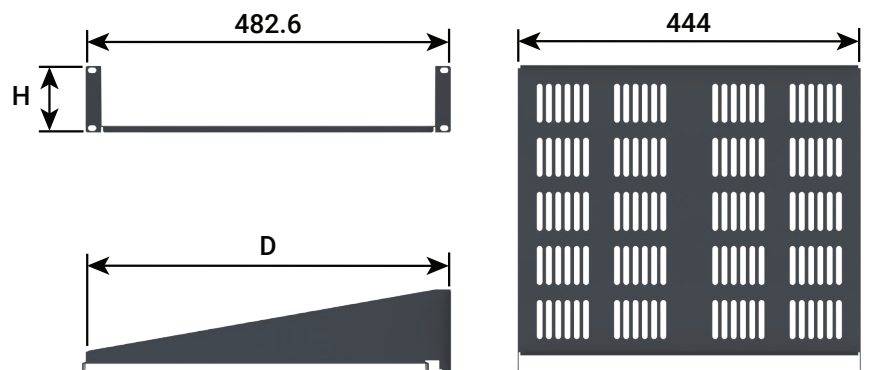
Part No.	Version	H	Ventilated
M 60 10 001	10.5"	3U	
M 60 19 010	19"	1U	
M 60 19 011	19"	1U	●
M 60 19 020	19"	2U	
M 60 19 001	19"	3U	



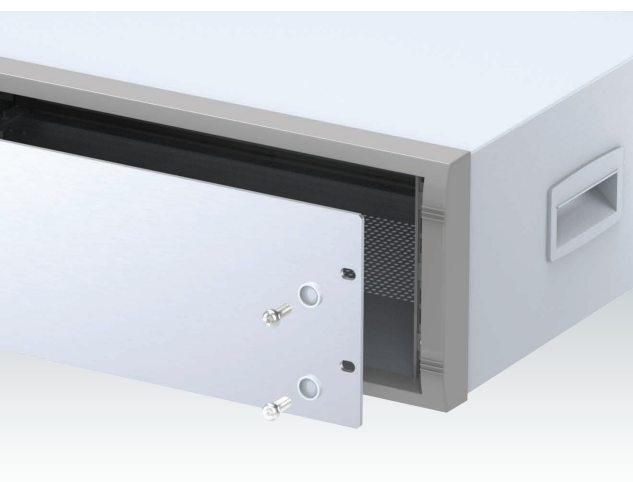
19" Cantilever Rack Shelves

Material: Mild steel CR4

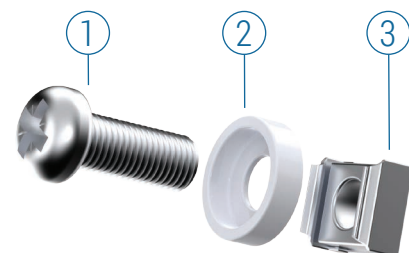
Supply: 1 shelf



Part No.	H	D	Colour
M 61 19 265	2U	280	○ RAL 7035
M 61 19 264	2U	280	● RAL 7016
M 61 19 285	2U	400	○ RAL 7035
M 61 19 284	2U	400	● RAL 7016



19" Mounting Kit



Part No.	Supply	Colour
M 60 00 035	①+②+③ x 4	○ RAL 7035 ②
M 59 00 016	①+②+③ x 4	● RAL 9005 ②
M 59 00 018	①+②+③ x 4	● RAL 9005 ① ②

INSTRUMET 19" | CUSTOMISED VERSIONS



Order your own customised version

We can supply the INSTRUMET 19"/10.5" enclosures fully customised to your individual technical specifications.

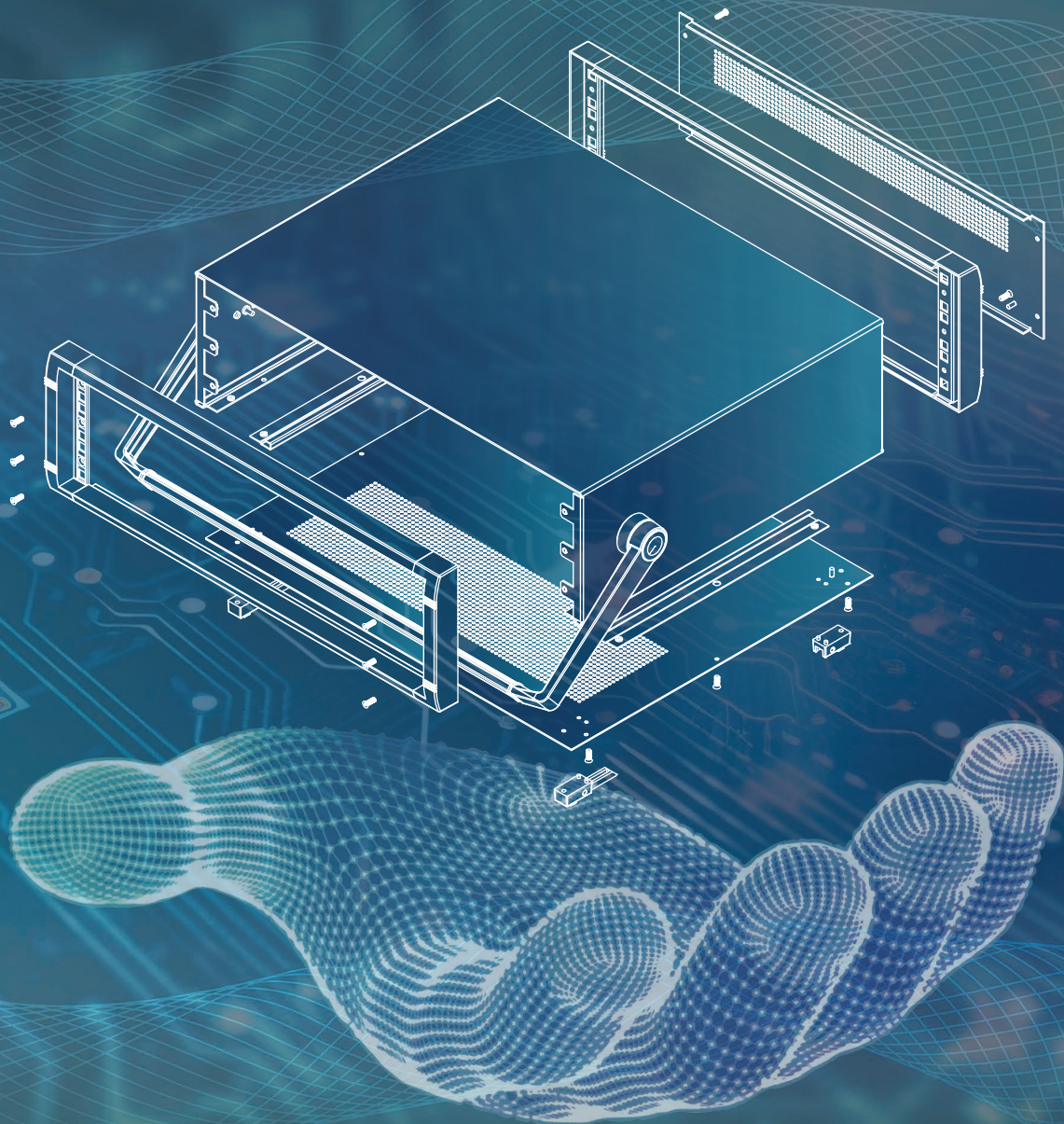
The external depth dimension can be modified to ensure your assemblies and equipment will fit exactly.

The enclosures and front panels can be machined with holes and cutouts for fitting displays, keypads, HMI touch panels, control buttons and connections.

Other services include adding inserts and screw bosses; custom colours and finishes; digital and silk-screen printing, and engraving.

Having a flexible manufacturing system allows us to offer competitive prices even for small quantities. Do not hesitate to ask us for a quotation.

Our sales team will be very happy to discuss your requirements and help you specify your INSTRUMET 19"/10.5" enclosures exactly as you need them.



METcase™

MANUFACTURER

Metcase Enclosures
A division of:
OKW Enclosures Ltd.
15 Brunel Way
Segensworth East
Fareham, Hampshire
PO15 5TX
United Kingdom

Telephone: +44 (0) 1489 583858
Email: sales@metcase.co.uk
Website: www.metcase.co.uk

© OKW Enclosures Ltd. All rights reserved
Catalogue Edition 1.1 – July 2025.
This catalogue will be valid until 31/12/2027.
Subject to technical modifications without notice.
Typographical and other errors do not justify any
claim for damages.
Digital Version: 07/2025e

Presented by:

Find your local sales partner here:



UNITED KINGDOM | IRELAND
OKW ENCLOSURES LTD
15 Brunel Way,
Segensworth East,
Fareham, PO15 5TX
United Kingdom
Phone: +44 (0) 1489 583858
Email: sales@metcase.co.uk
Website: www.metcase.co.uk



AUSTRALIA | NEW ZEALAND
ROLEC OKW Australia New Zealand PTY LTD
Unit 6/29 Coombes Drive, Penrith NSW 2750
Phone: +61 2 4722 3388
Email: metcase@rolec-okw.com.au
Website: www.metcase.com.au



BELGIUM | LUXEMBOURG
Telerex nv
Uilenbaan 90,
2160 WOMMELGEM, België
Tel: +32 3 326 40 00
Email: sales-be@telerex-europe.com
Website: www.metcase.co.uk



BRAZIL
sob Schurter + OKW do Brasil
Componentes Eletrônicos Ltda.
Rua Barão do Triunfo,
88 - Sala 606 Brooklin,
São Paulo/SP CEP 04602-000
Phone: +55 (11) 50 90 00 30
Email: info@sob-brasil.com
Website: www.metcase.co.uk



POLAND
LC ELEKTRONIK Sp. z o.o. Sp. k.
UL. PULKOWA 58,
01-969 Warszawa
Phone: +48 (22) 569 53 00
Email: lcel@lcel.com.pl
Website: www.metcase.co.uk



ISRAEL
P. Weiss
20 Ha-Ta'as st.
P.O.B. 50 Kfar-Saba, 4442520.
Phone: +972 9 7677500
Email: pweiss@pweiss.co.il
Website: www.metcase.co.uk



NETHERLANDS
Telerex Nederland B.V.
Minervum 7139, 4817 ZN BREDA
Tel: +31 76 578 20 00
Email: sales-nl@telerex-europe.com
Website: www.metcase.co.uk



ITALY
Alhof di A. Hofmann SPA
Via Melegnano 20,
20019 Settimo Milanese MI
Phone: +39 (02) 28 50 08 1
Email: alhof@alhof.com
Website: www.metcase.co.uk

www.metcase.co.uk