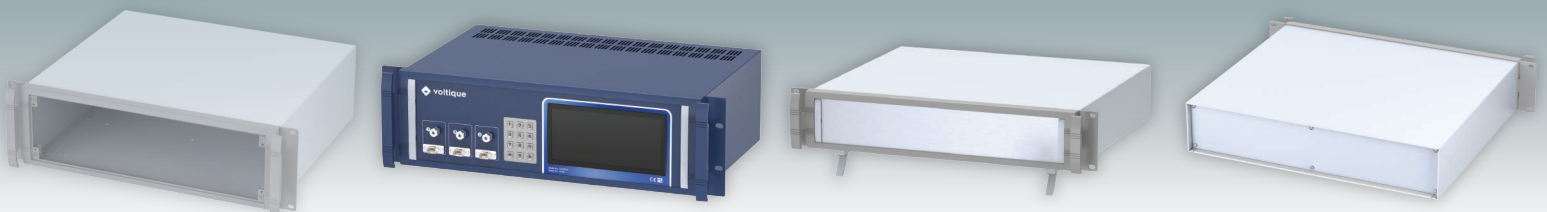


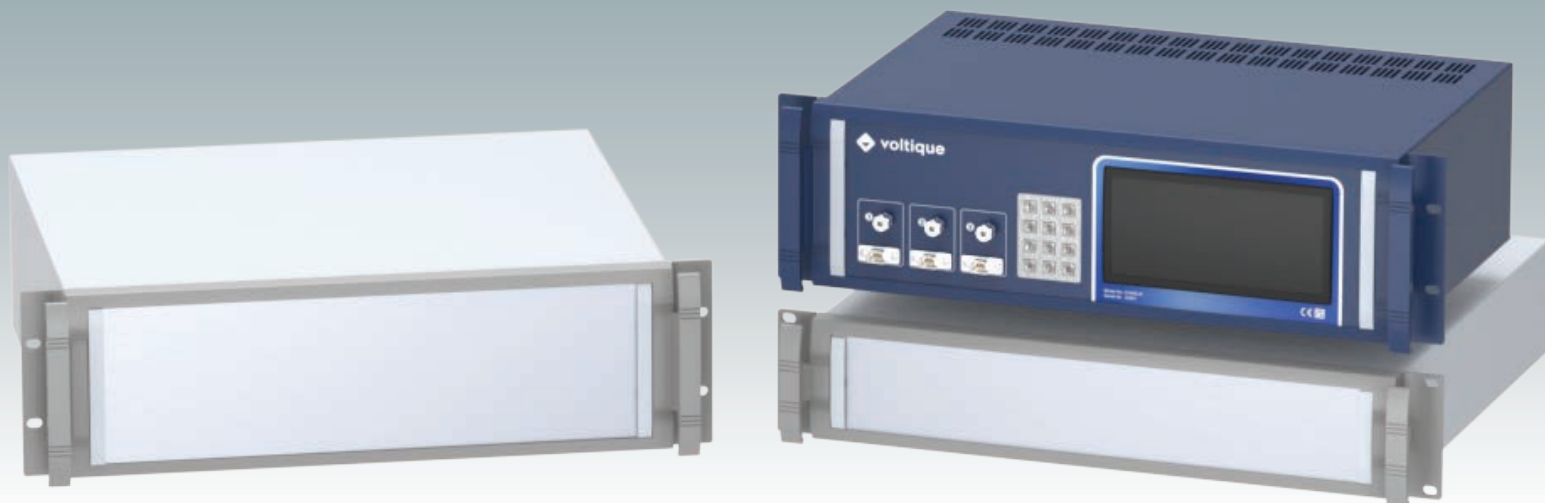


UNIMET 19"

Rack Mount Enclosures
DIN 41494 | IEC 60297-3



UNIMET 19"

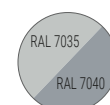


Modern 19" rack mount enclosures with removable front panels

Stylish range of aluminium 19" rack cases, compliant with DIN 41494 and IEC 60297-3 standards. Available in heights of 2U or 3U and two standard depths. Features an attractive diecast front bezel incorporating unique 'comfort handles' and rack mounting brackets. The robust case body includes a separate base and rear panel. The recessed front panel (accessory) can be removed while the enclosure remains fixed in the rack – ideal for servicing and equipment repairs. Accessories include PCB fixing pillars (mounted to the base) and moulded feet kits for desktop use. Order your fully customised version today.

Standard colours

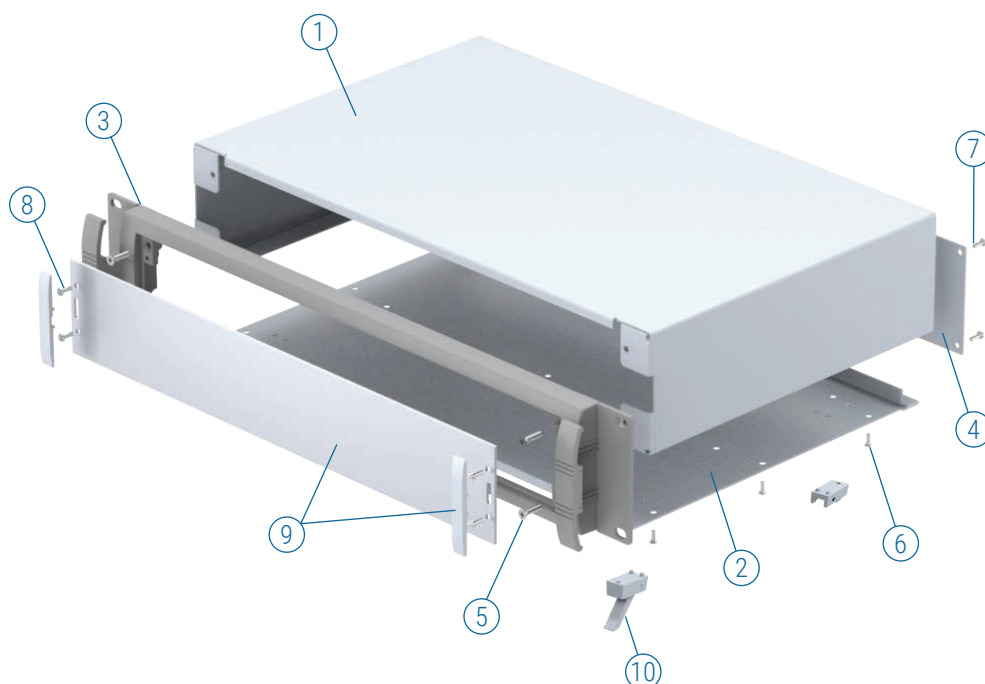
Light grey RAL 7035.
Window grey RAL 7040.



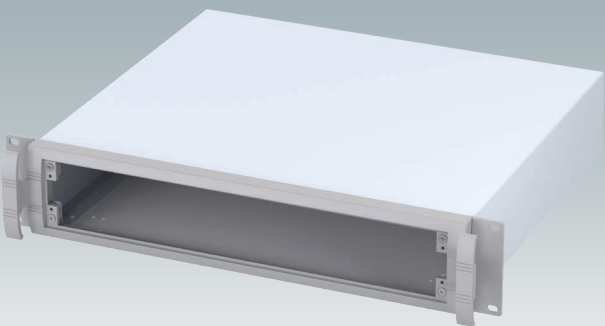
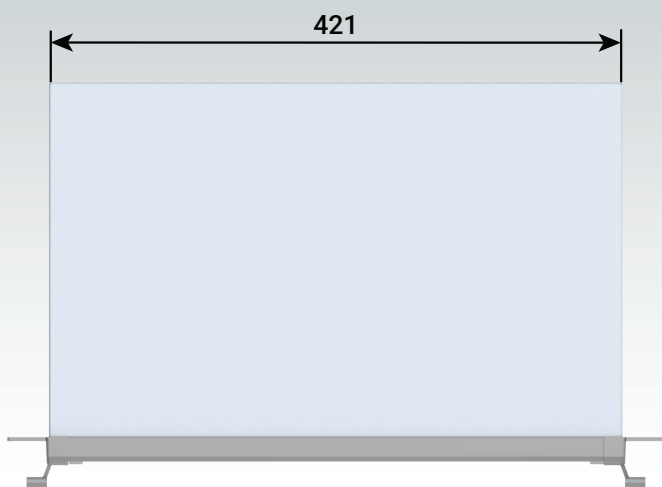
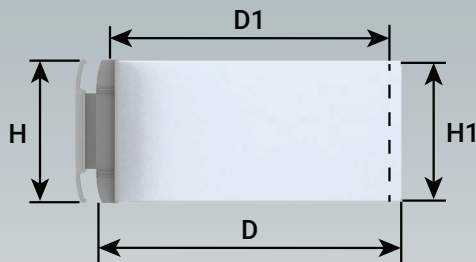
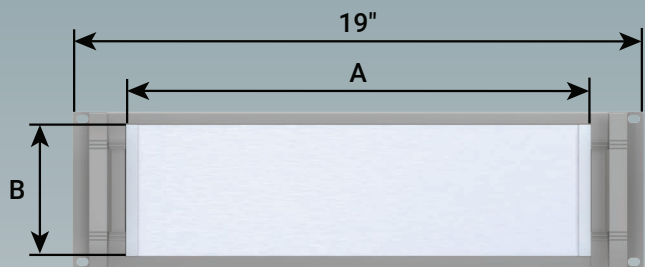
Supply

- ① Top cover
- ② Base panel
- ③ 19" front bezel
- ④ Rear panel
- ⑤ M4 x 16 mm (x4)
- ⑥ M3 x 8 mm (x6)
- ⑦ M3 x 8 mm (x6)
- ⑧ M3 x 8 mm (x4)
- ⑨ *Front panel kit
- ⑩ *ABS feet

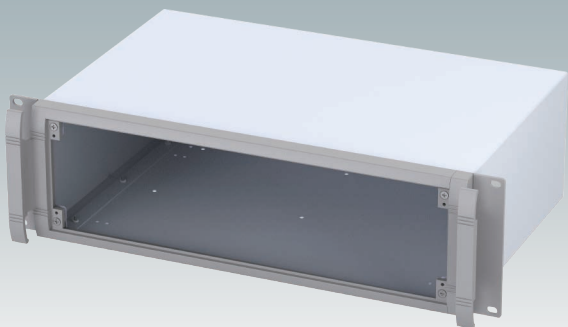
*accessories



UNIMET 19"



2U



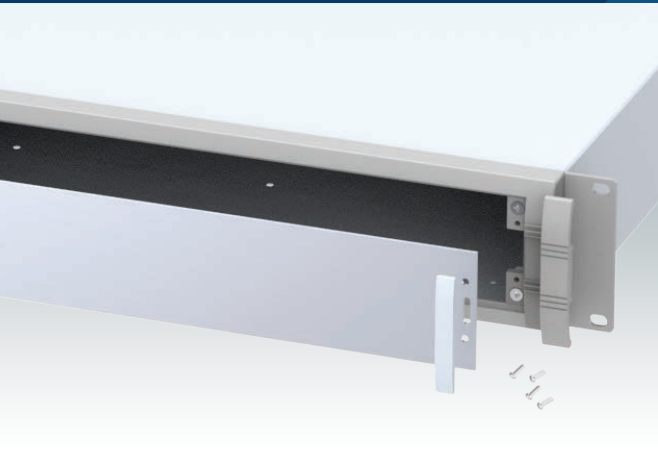
3U

UNIMET 19"

Part No.	Version	H	H1	D	D1	A Front Panel	B Front Panel
M 56 19 225	2U	88.1	84.6	280	262.2	392.5	67.1
M 56 19 235	2U	88.1	84.6	380	362.2	392.5	67.1
M 56 19 325	3U	132.5	129.1	280	262.2	392.5	111
M 56 19 335	3U	132.5	129.1	380	362.2	392.5	111

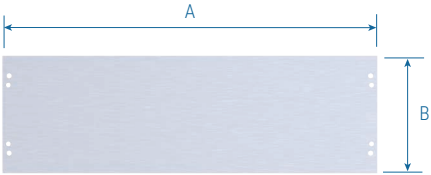
For full 2D drawings and 3D models please see our website.

For front panels and accessories see page 4.

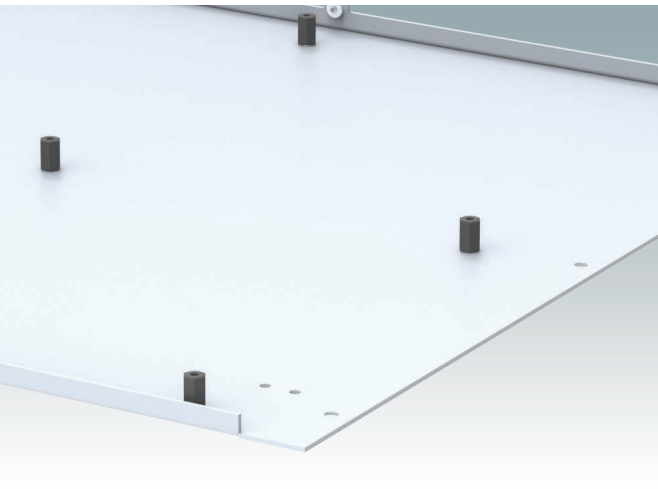


Front Panel Kits

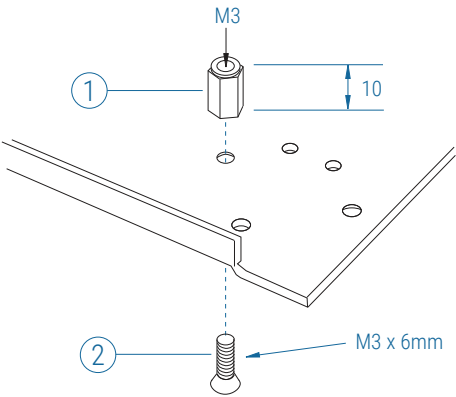
Supply:
Panel (2 mm matt anodised aluminium)
2 Trims (ABS, RAL 7035)



Part No.	Version	A	B
M 59 00 020	2U	392.5	67.1
M 59 00 030	3U	392.5	111



PCB Mounting Kit



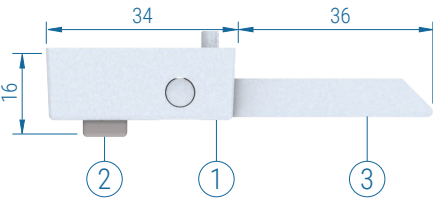
Part No.	Supply
M 56 00 001	①+② x 10



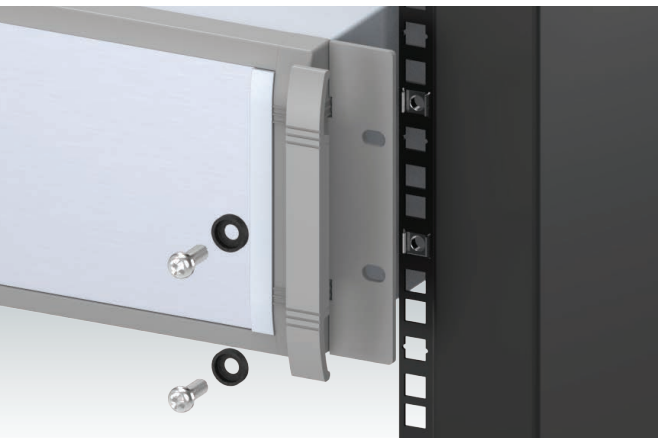
Feet Kits

These feet are attached to the pre-punched holes in the UNIMET 19" base panel using the included self-tapping screws.

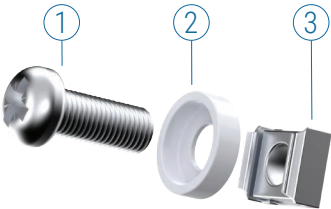
Material:
Feet and legs: ABS, light grey RAL 7035.
Non-slip pads: TPE, pebble grey RAL 7032.



Part No.	Version	Supply
M 56 00 015	Without tilt legs	①+② x 4
M 56 00 045	With tilt legs	①+② x 4 +③ x 2



19" Mounting Kit



Part No.	Supply	Colour
M 60 00 035	①+②+③ x 4	● RAL 7035 ②
M 59 00 016	①+②+③ x 4	● RAL 9005 ②
M 59 00 018	①+②+③ x 4	● RAL 9005 ① ②



Order your own customised version

We can supply the UNIMET 19" enclosures fully customised to your individual technical specifications.

The external depth dimension can be modified to ensure your assemblies and equipment will fit exactly.

The enclosures and front panels can be machined with holes and cutouts for fitting displays, keypads, HMI touch panels, control buttons and connections.

Other services include adding inserts and screw bosses; custom colours and finishes; digital and silk-screen printing and engraving.

Having a flexible manufacturing system allows us to offer competitive prices even for small quantities. Do not hesitate to ask us for a quotation.

Our sales team will be very happy to discuss your requirements and help you specify your UNIMET 19" enclosures exactly as you need them.



METcase™

MANUFACTURER

Metcase Enclosures
A division of:
OKW Enclosures Ltd.
15 Brunel Way
Segensworth East
Fareham, Hampshire
PO15 5TX
United Kingdom

Telephone: +44 (0) 1489 583858
Email: sales@metcase.co.uk
Website: www.metcase.co.uk

© OKW Enclosures Ltd. All rights reserved
Catalogue Edition 1.1 – November 2025.
This catalogue will be valid until 31/12/2027.
Subject to technical modifications without notice.
Typographical and other errors do not justify any
claim for damages.
Digital Version: 11/2025e

Presented by:

Find your local sales partner here:



UNITED KINGDOM | IRELAND
OKW ENCLOSURES LTD
15 Brunel Way,
Segensworth East,
Fareham, PO15 5TX
United Kingdom
Phone: +44 (0) 1489 583858
Email: sales@metcase.co.uk
Website: www.metcase.co.uk



POLAND
LC ELEKTRONIK Sp. z o.o. Sp. k.
UL. PULKOWA 58,
01-969 Warszawa
Phone: +48 (22) 569 53 00
Email: lcel@lcel.com.pl
Website: www.metcase.co.uk



AUSTRALIA | NEW ZEALAND
ROLEC OKW Australia New Zealand PTY LTD
Unit 6/29 Coombes Drive, Penrith NSW 2750
Phone: +61 2 4722 3388
Email: metcase@rolec-okw.com.au
Website: www.metcase.com.au



ISRAEL
P. Weiss
20 Ha-Ta's st.
P.O.B. 50 Kfar Saba, 4442520.
Phone +972 9 7677500
Email: pweiss@pweiss.co.il
Website: www.metcase.co.uk



BELGIUM | LUXEMBOURG
Telerex nv
Uilenbaan 90,
2160 WOMMELGEM, België
Tel: +32 3 326 40 00
Email: sales-be@telerex-europe.com
Website: www.metcase.co.uk



NETHERLANDS
Telerex Nederland B.V.
Minervum 7139, 4817 ZN BREDA
Tel: +31 76 578 20 00
Email: sales-nl@telerex-europe.com
Website: www.metcase.co.uk



BRAZIL
sob Schurter + OKW do Brasil
Componentes Eletrônicos Ltda.
Rua Barão do Triunfo,
88 - Sala 606 Brooklin,
São Paulo/SP CEP 04602-000
Phone: +55 (11) 50 90 00 30
Email: info@sob-brasil.com
Website: www.metcase.co.uk



ITALY
Alhof di A. Hofmann SPA
Via Melegnano 20,
20019 Settimo Milanese MI
Phone: +39 (02) 28 50 08 1
Email: alhof@alhof.com
Website: www.metcase.co.uk

www.metcase.co.uk